
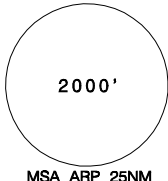
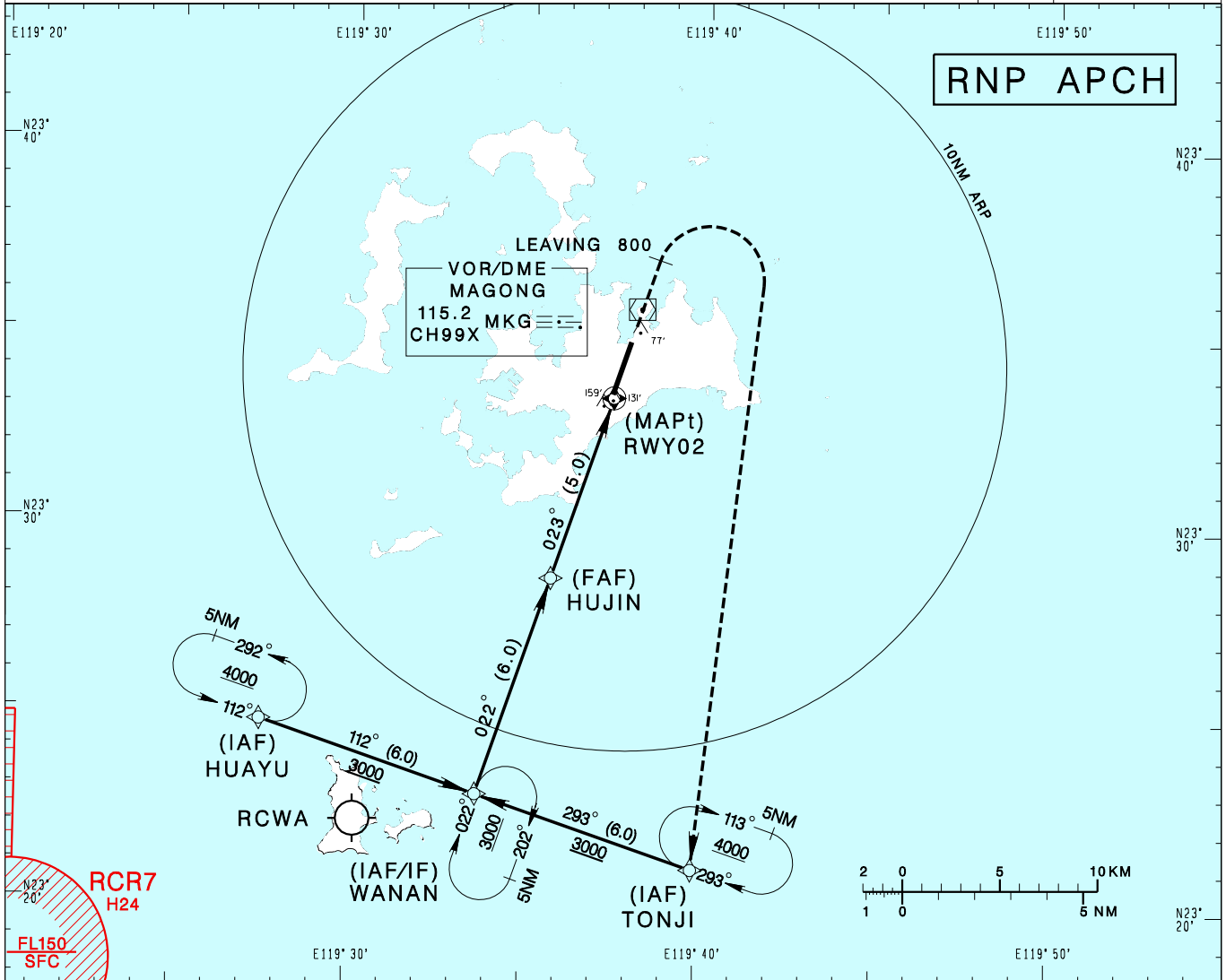


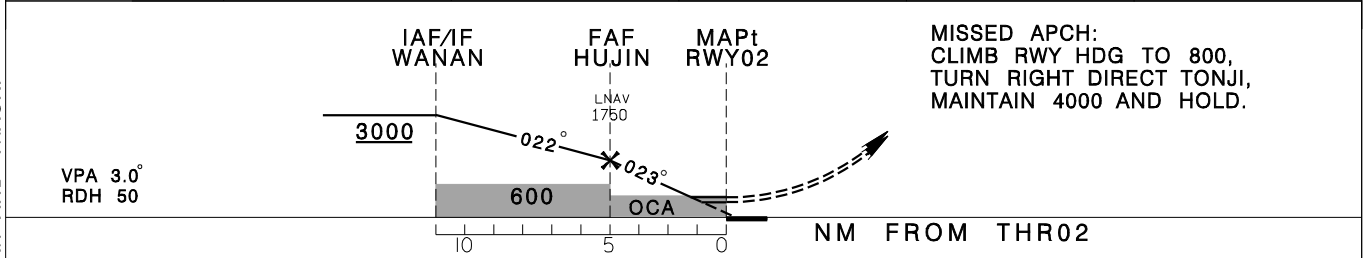
**澎湖機場**  
PENGHU AD

RCQC  
RNP RWY02

|  |                           |                      |  |                    |                    |
|--|---------------------------|----------------------|--|--------------------|--------------------|
| KAOSIUNG APP<br>128.1 234.8  | MAGONG TWR<br>118.3 236.6 | ATIS<br>127.05       | <br> |                    |                    |
| Apt Elev: 103'   |                           | Rwy02 THR Elev: 103' |  | Trans Level: FL130 | Trans Alt: 11,000' |
| BEARINGS ARE MAGNETIC; DISTANCES ARE NAUTICAL MILES; ELEVATIONS, HEIGHTS IN FEET |                           |                      |  |                    |                    |



|                       |       |      |      |     |     |
|-----------------------|-------|------|------|-----|-----|
| DIST (NM) to THR 02   | 5     | 4    | 3    | 2   | 1   |
| DIST (NM) to Next WPT | HUJIN | 4    | 3    | 2   | 1   |
| ADVISORY ALT          | 1750  | 1430 | 1110 | 790 | 480 |



| MINIMA (OCA IN FT, VIS IN M, OCH IN FT) |                       |                       |                       |                       |                       |
|---|-----------------------|-----------------------|-----------------------|-----------------------|-----------------------|
| CATEGORY                                |                       | A                     | B                     | C                     | D                     |
| LNAV/VNAV                               | STRAIGHT IN           | 410/ 800 RVR750 307   | 410/ 800 RVR750 307   | 410/ 800 RVR750 307   | 410/ 800 RVR750 307   |
|   | STRAIGHT IN (ALS OUT) | 410/ 1400 RVR1400 307 | 410/ 1400 RVR1400 307 | 410/ 1400 RVR1400 307 | 410/ 1400 RVR1400 307 |
| LNAV                                    | STRAIGHT IN           | 430/ 1200 RVR1200 327 | 430/1600 327          | 430/1600 327          | 430/1600 327          |
|   | STRAIGHT IN (ALS OUT) | 430/1600 327          | 430/1600 327          | 430/1600 327          | 430/1600 327          |

NOTE  
1. CIVIL AIRCRAFT USE EAST TRAFFIC CIRCUIT.  
2. BARO-VNAV NOT AUTHORIZED BELOW 0°C.  
3. DME/DME NOT AUTHORIZED

CHANGES: UPDATE MAG VAR AND TRACK.